

# HD60v5



## DUMPING HEIGHT

13'3"

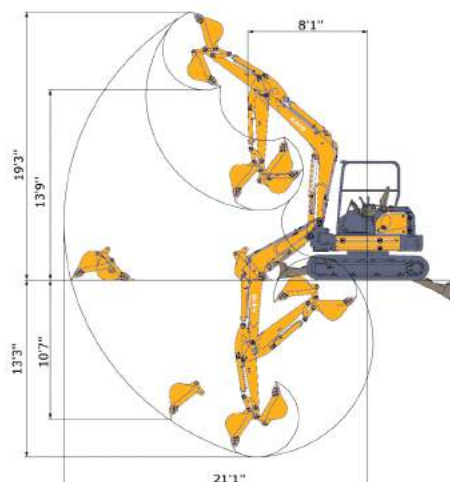
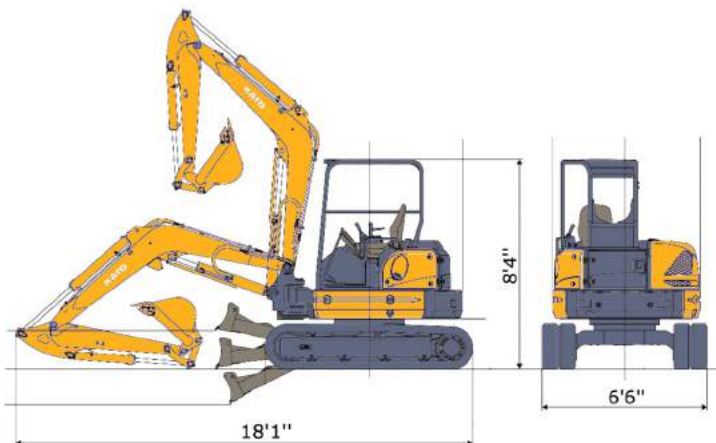
## OUTPUT RATING

43.5 HP

## OPERATING WEIGHT

12,351 LBS

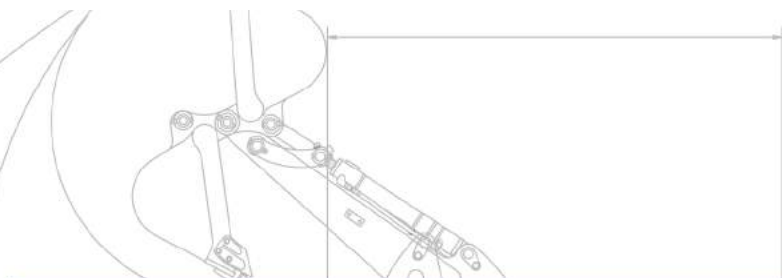
# KATO



### 60V5

Working  
Ranges

		Working Ranges
<b>A.</b>	Max Digging Radius	21'1"
<b>B.</b>	Max Digging Depth	13'3"
<b>C.</b>	Max Vertical Dig Depth	10'7"
<b>D.</b>	Max Dumping Height	13'9'
<b>E.</b>	Max Digging Height	19'3'
<b>F.</b>	Min. Front-turn Radius	8'1"
<b>G.</b>	at Right Boom Swing	7'



### **Performance**

Bucket Capacity	6.4 ft <sup>3</sup>
Bucket Width	24"
Operating Weight	12,351 lbs.
Transport Weight	11,839 lbs.
Swing Speed	9.3 rpm
Travel Speed (Low/ High)	1.8 / 2.9 mph
Gradeability	30°
Ground Pressure	4.5 psi
Bucket Digging Force	10,165 lbs.

### **Engine**

Model	Kubota V2403-CR-E5B
Output Rating	43.5 hp @ 2400 rpm
Fuel Tank Capacity	17.4 gal

### **Boom Swing System**

Type	Offset Boom w/ Hydraulic Cyl.
Swing Angle (L / R)	50° / 80°

### **Hydraulic System**

Total Hydraulic System Flow	43 gpm
Max Auxiliary Hydraulic Flow	16 gpm

### **Dozer Blade**

Size	1' 3" x 6' 6"
Lift Above / Drop Below Ground	1' 6" / 1' 5"



**HD60V5**

**KATO**

**EXCAVATORS AND TRACK LOADERS**

**www.KATOCES.com**

**400 Production Court**

**Elizabethtown, KY 42701**

**(800) 538-1447 | Fax: (270) 737-0419**